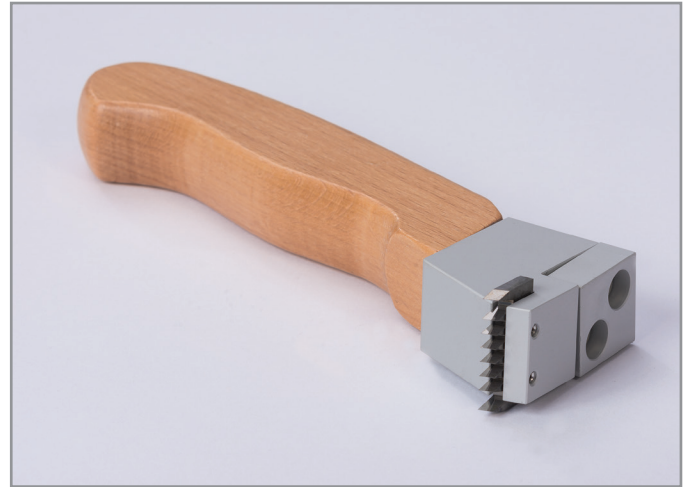


Cross-Cut Kit 1-edge

Crosshatch Adhesion Kit - single blade

This method is used for determining the parallel groove paint adhesion of one or many layers on a substrate, generally a metal panel. Cross-Cut Tester Kits are available in 2 different crosscut blade versions, one is a multi-cut blade with 6 cutting edges, the other version has one cutting edge. The Cross Cut blades are made of hardened steel alloy and are designed for retaining a sharp cutting edge to reduce the frequency of blade replacement.



Cross-Cut Test according to ASTM and ISO Standards

ASTM method D3359

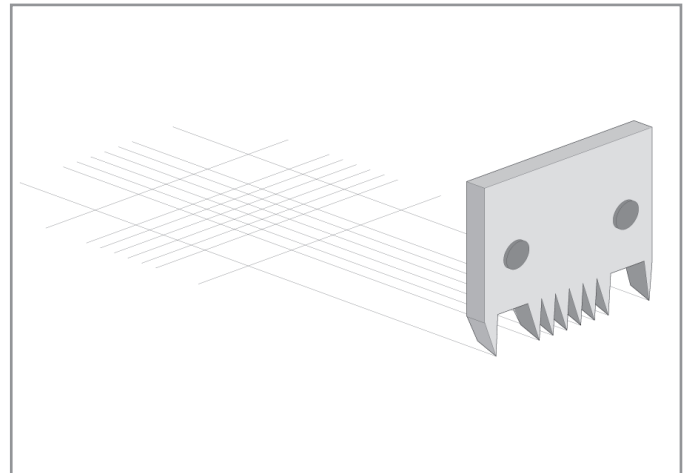
This method requires 11 cut lines for 1 mm cutter:

- 1 mm cutter for films up to 50 μm (2 mils) thick
- 2 mm cutter for films between 50-125 μm (2 - 5 mils) thick

ISO standards

ISO standards prescribe that the number of cuts shall be 6, and that the cut in each direction must be according to the film thickness and type of coating used as shown below:

- 0 - 60 μm 1 mm space for hard substrates (metal)
- 0 - 60 μm 2 mm space for soft substrates (plastic)
- 61 - 120 μm 2 mm space for hard or soft substrates
- 121 - 250 μm 3 mm space for hard or soft substrates



Standards

In compliance with:
ASTM D3002
ASTM D3359
ISO 2409
DIN 927-3



Catalog Number	5123	5124	5125	5126	5127	5128
Short Description	Cross-Cut Kit 11, 1-edge 1 mm	Cross-Cut Kit 6, 1-edge 2 mm, ASTM	Cross-Cut Kit 6, 1-edge 1 mm	Cross-Cut Kit 6, 1-edge 2 mm	Cross-Cut Kit 11, 1-edge 1.5 mm	Cross-Cut Kit 6, 1-edge 3 mm
Standard	ASTM		DIN / ISO		ASTM	DIN / ISO
No. of Teeth	11	6			11	6
Cutter Spacing	1 mm 0.04 in	2 mm 0.08 in	1 mm 0.04 in	2 mm 0.08 in	1.5 mm 0.06 in	3 mm 0.12 in
Material	wooden handle					

Delivery Content

Cross-Cut Tester kit with blade, Hex wrench for changing blades, Magnifier (5136), Cleaning brush (5135), One roll of adhesive tape, Manual, Carrying case

Catalog Number	Short Description
3425	Cross-Cut Blade 6, 1-edge 1 mm
3426	Cross-Cut Blade 6, 1-edge 2 mm
5129	Cross-Cut Blade 6, 1-edge 3 mm
3429	Cross-Cut Blade 11, 1-edge 1 mm
3424	Cross-Cut Blade 11, 1-edge 1.5 mm
5135	Brush
5136	Magnifier
5137	Adhesive Tape for DIN/ISO
8660	Adhesive Tape for ASTM D3359